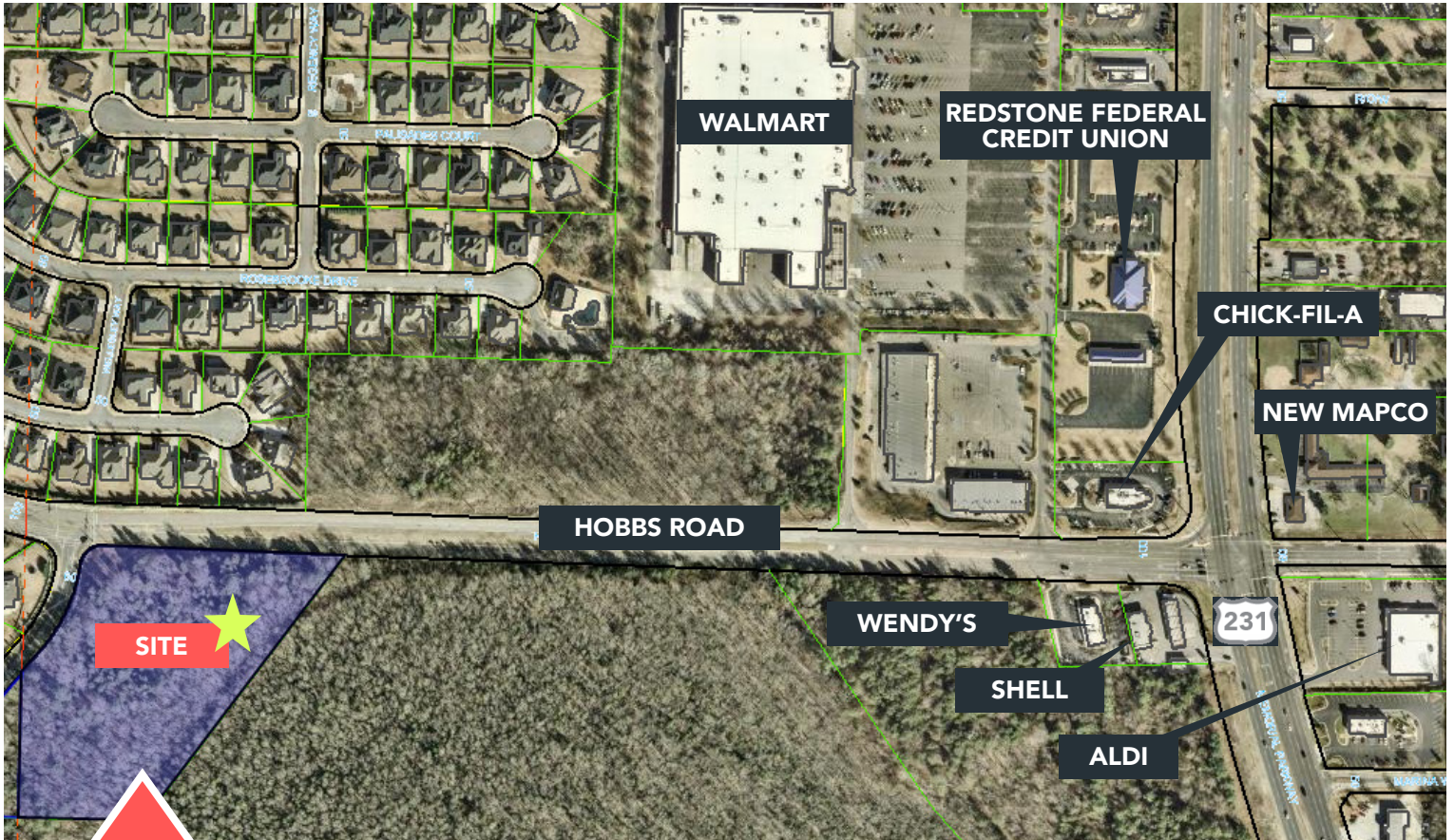




FOR SALE

7.38 ACRES OF PRIME REAL ESTATE FOR DEVELOPMENT IN SOUTH HUNTSVILLE



7.38 ACRES OF PRIME REAL ESTATE: HOBBS/BELL MOUNTAIN ROADS

Site Size: 7.38 acres

Zoning: C-4 Highway
Business

Traffic Count: +10,000
VPD on Hobbs Road

\$350,000

Excellent opportunity for development on the southeast corner of Hobbs Road and Bell Mountain Road, less than one quarter mile west of Memorial Parkway in South Huntsville. Property is within close proximity to Walmart, Chick-fil-A, Aldi, Shell convenience store, Wendy's, and various other retail.



Stephens Real Estate Services
203 East Side Square, Huntsville 35801
www.stephenappraisalservices.com
Huntsville Office: 256-533-7878
Leigh Stephens - Broker
Elizabeth Brewster - Sales Agent