

# SRS

## STEPHENS REAL ESTATE SERVICES

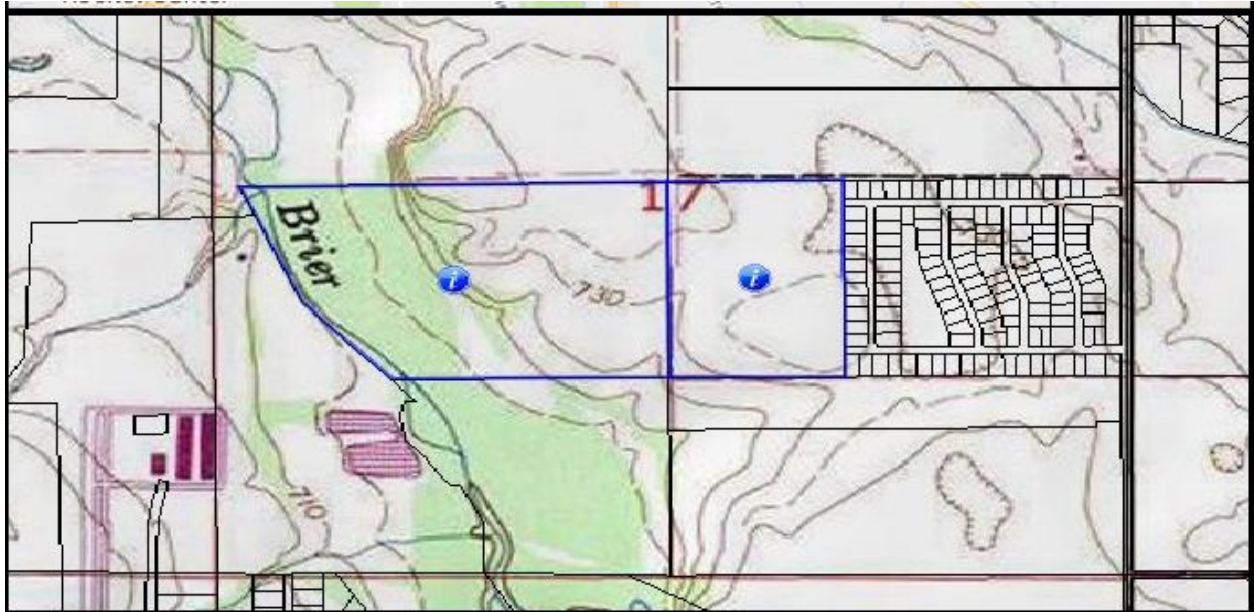


### **75 ACRES VACANT LAND--\$1,312,500**

Off of McCollum Drive  
Meridianville, Alabama

- ) Located west of BrierCreek Subdivision
- ) No Zoning, No Deed Restrictions
- ) Located Adjacent to Integra Water Private Sewer
- ) No Flood Hazards
- ) Two Access Roads from BrierCreek Subdivision
- ) Lynn Fanning Elementary, Meridianville Middle,  
Hazel Green High School

**Leigh Stephens, Broker**  
203 Eastside Square, Suite 2  
Huntsville, Alabama 35801  
Telephone: (256) 533-7878



Parent Parcel; Wooded West Area Excluded

